

Available Home

PARK PLACE
WAXAHACHIE



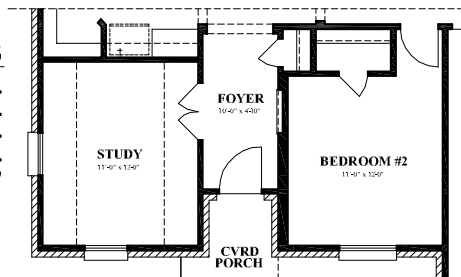
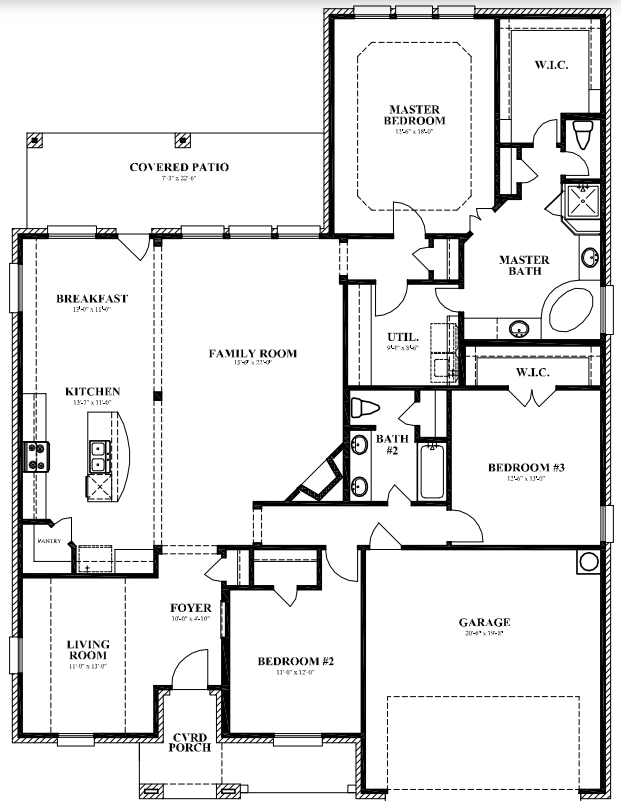
209 BOARDWALK
WAXAHACHIE, TX 75165



FEATURES:

- NEW CONSTRUCTION
- 2,233 SF
- 1 STORY
- 3 BEDROOMS, 2 BATHS
- COVERED PATIO & PORCH
- NEW STONE ELEVATION
- FIREPLACE
- GRANITE KITCHEN COUNTERTOP
- TILE IN WET AREAS
- AND MORE...

AVAILABLE IN JULY!



Plan Number: 2233
A/C Footage: 2233 S.F.
Covered Porch/Patio: 295 S.F.
Garage and Storage: 429 S.F.
Total Under Roof: 2957 S.F.
Width/Depth: 50' X 66'

OPTIONAL STUDY

FLOOR PLAN

*Prices, plans, specifications, square footage, availability, and terms are subject to change without notice or prior obligation. Square footage is approximate and may vary upon elevations and /or options selected. Please see Sales Counselor for additional information. Lillian Custom Homes is an equal opportunity home builder.

